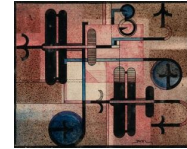
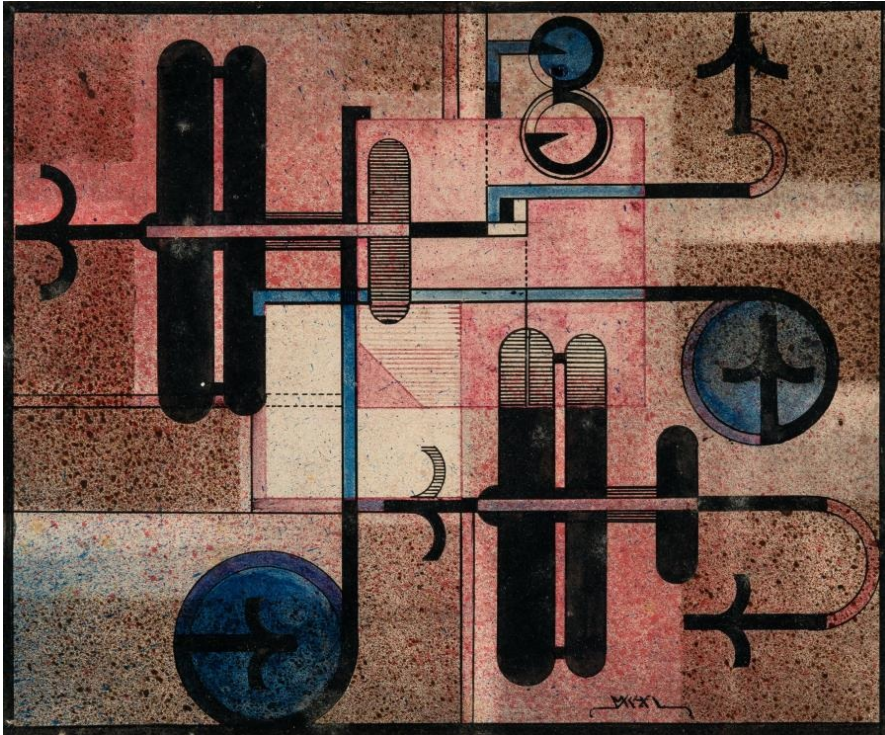


KARL&FABER

Robert Michel

Lot 657

Ohne Titel



Low estimate :

EUR 15,000.00

High estimate :

EUR 20,000.00

Buyers premium incl. VAT :

32 %

Artist

Robert Michel

Additional description

Aquarell und Tusche mit Spritztechnik auf dünnem Papier, auf Papier kaschiert. (Um 1927). Ca. 17 x 20,5 cm (Unterlage ca. 32,5 x 44 cm). Signiert unten rechts.

Period

(1897 Vockenhausen/Taunus - Titisee-Neustadt 1983)

Technique

Arbeiten auf Papier

Provenance

Nachlass des Künstlers; Sprengel Museum, Hannover; Privatbesitz, Paris.

Robert Michel developed his artistic style in the early 1920s and is considered a pioneer of modern collage. He was a versatile artist who worked in the fields of graphics, typography and architecture and absorbed influences from various art movements. As in the present sheet, his enthusiasm for machines is reflected.

Here, too, he uses geometric shapes and clear lines to achieve a dynamic and structured effect. The spray technique – here from red to blue – enables him to create misty, soft colour gradients that contrast with the clear, precise lines. In this way, he deliberately wanted to expand the technique of traditional painting in order to create mechanical-looking effects.

Exhibition: Robert Michel 1897-1983, Sprengel Museum, Hanover et al. 1988/89, cat. no. 72, ill. p. 79.