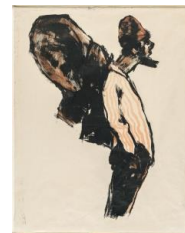
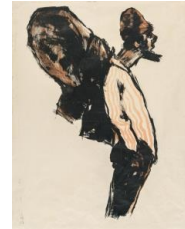


KARL&FABER

Emil Nolde

Lot 639

Händler



Low estimate :

€ 7,000

High estimate :

€ 9,000

Buyers premium incl. VAT :

32 %

Artist

Emil Nolde

Additional description

Farbige Lithografie auf feinem Papier (auf der Rückseite einer typografischen Schreibvorlage). (1913). Ca. 62 x 40 cm (Blattgröße ca. 68 x 52 cm). Dreifarbiger Probedruck vor der Auflage von 45 Exemplaren.

Period

(1867 Nolde - Seebüll 1956)

Technique

Druckgrafik

Provenance

Privatsammlung, als Geschenk des Künstlers; Bassenge, Berlin 29.11.2008, Los 7836; Privatsammlung, Süddeutschland.

Nolde's colour lithographs from around 1913 represent a high point of Expressionist printmaking. The lithography technique allowed him a spontaneous creative process that was similar to watercolour and oil painting and enabled translucent nuances and painterly effects by diluting the printing ink. The large-format lithograph "Dealer" is also one of these special sheets. The copy on offer here is also one of the few proofs that Nolde printed on the reverse of a writing model. Only 45 numbered copies were published in the subsequent edition. In 1925/26, the artist then overprinted a few more copies of the edition as well as some of the proofs with a fourth stone with oblique colour areas in different shades. Our unoverprinted proof from 1913 therefore has great rarity value.

One of the few proofs not subsequently overprinted. Very rare.

Schiefler/Mosel/Urban L 50.