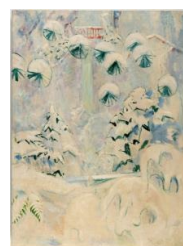


# KARL&FABER

## Oskar Moll

## Lot 573

Schneelandschaft mit roter Brücke



Low estimate :	EUR 20,000.00
High estimate :	EUR 30,000.00
Buyers premium incl. VAT :	27 %

**Artist**

Oskar Moll

**Additional description**

Öl auf Leinwand. (19)42. Ca. 99 x 72,5 cm. Signiert und datiert unten rechts.

**Period**

(1875 Brieg/Schlesien - Berlin 1947)

**Technique**

Gemälde

**Provenance**

Sammlung Mrs. Robert Charles Weinberg, New York, 1947 direkt beim Künstler in Berlin erworben, im Besitz bis 1975; Privatsammlung, USA; The Museum of Modern Art, New York, verso auf der Rahmenrückwand mit dem Etikett, 1979 als Geschenk von Vorgenannter erhalten.

- Comparable to positions by Feininger, Purmann and Matisse - characterized by unmistakable independence and lyrical reduction
- Works from the 1940s by Oskar Moll are considered rare and particularly collectible
- Typical work by the artist, showing the synthesis of French modernism and German formal culture

Oskar Moll's work combines influences from Impressionism, Fauvism, Expressionism and Cubism to create an unmistakably lyrical visual language. The former biology student rediscovers the laws of growth, form and color in painting - always in search of the living rhythm of nature: "In our teachings of analytical and synthetic composition, in the mastery of the world of form and color with its various contrasting effects, nature, the great teacher, will always stand by our side so that we can achieve harmony in the face of its eternal rhythm, through contrast and balance."

Oskar Moll, 1930

In this delicate, almost Japanese-like winter landscape from 1942, Moll demonstrates his masterful ability to merge space and surface. Snow, trees and architectural fragments dissolve into a transparent mesh of light and color. The gaze is not guided, but floats - as if in a quiet moment of contemplation.

Moll's compositional reduction and subtle use of color lend the painting an almost spiritual calm. Here, his proximity to French modernism is combined with an inner clarity reminiscent of Far Eastern aesthetics. A work of haunting poetry and rare balance - a highlight of his late work, in which Moll finds his own form of harmony.

Salzmann 479.