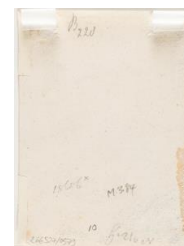


# KARL&FABER

## Rembrandt Harmensz. van Rijn **Los 347**

The Shepherd and his Family ('Het Hardertje')



Unterer Schätzpreis :  
Oberer Schätzpreis :  
Aufgeld inkl. USt. :

EUR 18,000.00  
EUR 22,000.00  
27 %

**Künstler**

Rembrandt Harmensz. van Rijn

**Zusätzliche Beschreibung**

Etching with touches of drypoint. (1644). 9.5 x 6.8 cm (sheet).

**Lebensdaten**

15.-18. Jahrhundert

**Technik**

Druckgrafik

**Provenienz**

Sotheby's London, 18 March 2014, lot 25.

A very fine impression of this rare print, with strong burr at the lower right and excellent contrasts. With thread margins. This intimate pastoral scene depicts a shepherd offering a jug to a woman nursing her child, while their flock gathers by a stream. Set within an idealised landscape, the composition combines everyday rural life with subtle biblical associations, often linked to the Rest on the Flight into Egypt. Executed in etching with touches of drypoint, the print displays a rich tonal range, contrasting a more defined foreground with an atmospheric background. The velvety drypoint burr enhances depth and light effects, while incidental marks in the sky reveal the reuse of the plate. – Small brown spots, mainly in the upper right corner. The lower left corner reinforced verso. On the reverse, traces of mounting remain along the edges, otherwise in very good condition.